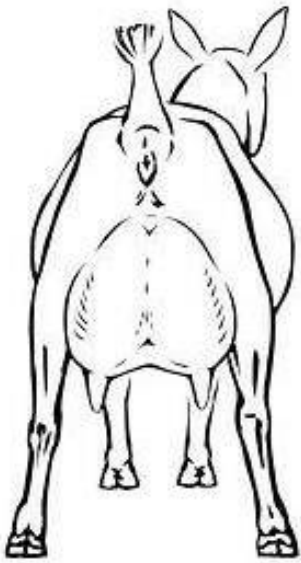
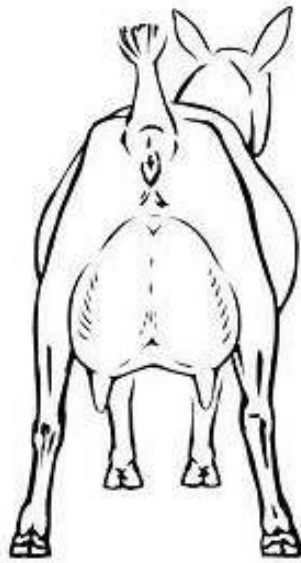


Goat Marking Guidelines

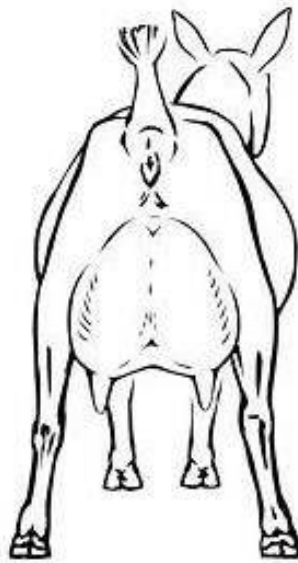
Mastitis



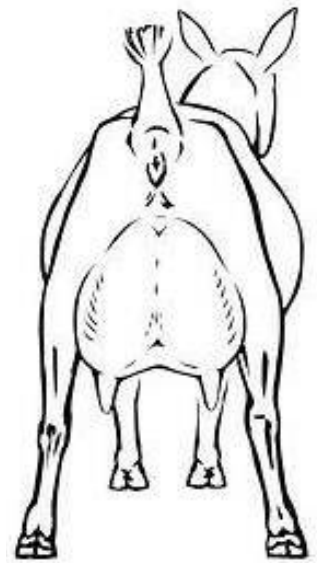
Suspected - Watch



Milk into Test Bucket
(Not Treated)



Don't Milk this Side



Don't Milk

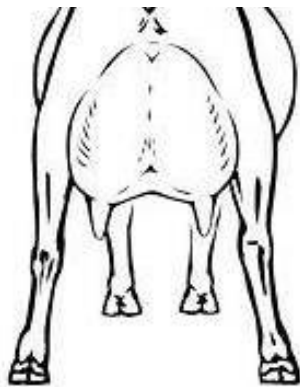
Other Health Issues

Diarrhoea Once a Day



Don't Milk into vat if
Udder/Legs very dirty

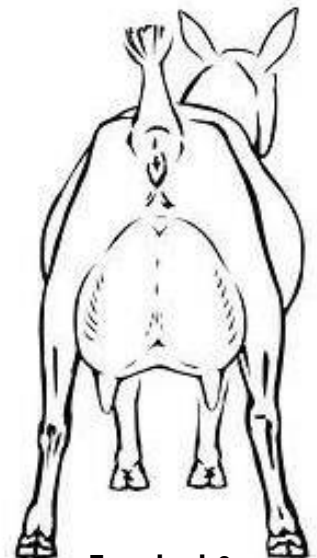
Milk once a day if low
milk production



Milk AM only



Treated but NOT
Under Withholding



Treated &
Under Withholding

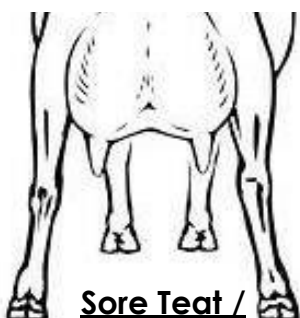
Milk into Test Bucket

Milk MUST NOT enter
vat or be fed to
cabrito kids or
bobby calves

May be milked into
the vat.

EX = Treated with
Exceed

Fl = Treated with
Flunixin



Sore Teat /
Cut



Unwell -
Watch for
changes